

# CREATIVE ARTS WORKSHOPS-VENARELLA HINKLE

## I. SATURDAY, APRIL 20TH AND APRIL 27TH-CROCUS FLORAL WORKSHOP

THE CROCUS IS OUR HARBINGER FOR SPRING HERE IN THE MIDWEST. SOMETIMES WE SEE THEM POKING THROUGH THE SNOW AS IF TO WHISPER SPRING HAS ARRIVED.

THIS WORKSHOP WILL TEACH YOU HOW TO GIVE THE IMPRESSION OF SUNLIGHT POURING THROUGH THE PEDALS OF THIS WELCOMED FLOWER AND INDICATIONS OF SHADOWS OF THE STAMENS FROM WITHIN.





## Venarella Hinkle's Master Supply List and

### Color Choices for Crocus Workshop:

-Daniel Smith Extra Fine Watercolors: Ultramarine Blue or Phthalo Blue (Red Shade),  
Quinacridone Gold, Opera, Sap Green, Green Gold, Indigo

1. One 2oz Spray Bottle
2. Rubber Cement Pick Up.
3. Winsor and Newton REMOVABLE Art Masking Fluid.
4. Drawing Pencil.
5. Kneaded Eraser, any brand.
6. Pencil Sharpener.
7. Graphite Tracing Paper. I buy mine at Hobby Lobby. 8x10 Masters Touch brand Wax-Free gray Printable Transfer Paper, (make sure it is white on one side and gray on the transferring side.
8. 2-inch Masking Tape.
9. Ruler. (Not used for every Workshop)
10. Small Household Sponge
11. Paper Towels
12. An Old Hand Towel.
13. Two Water Containers. Doesn't need to be fancy, can be clean empty plastic butter tubs.....etc.
14. Bar of soap in a baggie or container.
15. Hair Dryer, preferably with a cold shot button
16. One Small Round, and One Medium Round Yellow Cheep Joes Ugly Brushes, or other inexpensive brushes {For applying Masking Fluid}.
17. Brands of Paint Brushes I recommend. Unless you already have your favorites here are two good Brand choices that won't break the bank.
  1. da Vinci Watercolor Brushes:
    - da Vinci 5590 Petit Gris Mix Round size 2
    - da Vinci Petit Gris Mix Round size 6 or 8
    - da Vinci 991 Petit Gris Mix Flat Wash size 18.
  2. Black Velvet Watercolor Brushes.
    - Black Velvet Round Brush size 6 or 8
    - Black Velvet Round size 2
    - Black Velvet Oval Wash Brush 3/4 inch
18. Palette: Stephen Quiller standard (large) or travel (smaller) round Palette with cover. You may already have your favorite Palette, however this round shape is good for learning the color wheel and color mixing.
19. Artist grade or Professional Paints are a must for good results. I have narrowed down the recommended colors you will need for my Crocus Course
  - I use Daniel Smith brand tube Watercolors:
  - Daniel Smith Extra Fine Watercolors: Ultramarine Blue
  - Quinacridone Gold, Opera, Sap Green, Green Gold, Indigo

20. Good paper is a must for good results. Good grade Professional Watercolor Paper is not the thing to skimp on.  
-I use 9x12 140 lb. Arches Cold Press Watercolor Paper Block or Tablet.

\*Notes: Art Supply Stores charge more for this Paper than Cheap Joes (On Line)

If you do not purchase the block Paper, you will need to go through the paper stretching process.

How to Stretch your paper: We will be working on an 8x10 format for the Workshop's.

Paper should be cut approximately 9x12, placed on a towel front side down, wet back of paper well, when Paper has started to warp place on board dry side up and tape off at 1/2 in., or staple all around, let dry over night.

Board: I use gray Homasote board found at Home Depot. I wet and stretch paper, then staple edges about 1 inch apart all around the paper.  
This should be done the night before each Workshop.



2. SATURDAY, MAY 11TH AND 18TH-BABY ROBIN WORKSHOP

THE VIEWER PEERS THROUGH THE BUSHES AND SPOTS A BABY ROBIN ABOUT TO LEAVE THE NEST.  
LEARN HOW TO GIVE THE IMPRESSION OF FEATHERS ON THIS SWEET BABY ROBIN.







Venarella Hinkle's Master Supply List  
and  
colors for Baby Robin Workshop

1. One 2oz Spray Bottle
2. Rubber Cement Pick Up.
3. Winsor and Newton REMOVABLE Art Masking Fluid. I recommend. Winsor and Newton brand.
4. Pencil.
5. Kneaded Eraser, any brand.
6. Graphite Tracing Paper.
7. 2-inch Masking Tape.
8. Small Household Sponge
9. An Old Hand Towel.
10. Two Water Containers. Doesn't need to be fancy, can be clean empty plastic butter tubs.....etc.
11. Bar of soap in a baggie or container.
12. Hair Dryer, preferably with a cold shot button
13. One small round Yellow Cheep  
Joes Ugly Brushes, or other inexpensive brushes {delegated for applying Masking Fluid}.
14. Brands of Paint Brushes I recommend. Unless you already have your favorites here are two Brand choices to chose from. \*Note: Reprographics Art Supply store has Black Velvet brand.
  1. da Vinci Watercolor Brushes:
    - da Vinci 5590 Petit Gris Mix Round size 2
    - da Vinci Petit Gris Mix Round size 8
    - da Vinci 991 Petit Gris Mix Flat Wash size 18.
  2. Black Velvet Watercolor Brushes.
    - Black Velvet Round Brush size 8
    - Black Velvet Round size 2
    - Black Velvet Oval Wash Brush 3/4 inch
15. Palette: I use Stephen Quiller standard (larger) or travel (smaller) round Palette with cover.  
You may already have your favorite Palette, however this round shape is good for learning the color wheel and color mixing.
16. Artist grade or Professional Paints are best. I have narrowed down the colors for this Workshop.  
I use Tube Daniel Smith Extra Fine Watercolors:  
Recommended colors-Sap Green, Indigo, Quinacridone Gold, Burnt Umber, Burnt Sienna, Green Gold (I love the effects D.S. Green Gold pigment gives, however you may mix Perm Yellow Lemon and Sap Green for a spring green hue)  
Ultramarine, Alizarin Crimson, Lemon Yellow, Yellow Orange.
17. Of all the supplies paper is not something to skimp on for good results. I use 9x12 140 lb. Arches 100% Cotton Cold Press Watercolor Paper Block or Pad.

\*Note: If you do not purchase the block Paper, you will need to go

through the paper stretching process.

We will be working on an 8x10 format in the Workshop's. Paper should be placed on a towel front side down, wet back of paper well, when Paper has started to warp place on board dry side up and tape off at 1/2 in. all around, let dry over night.

This should be done before for each Workshop.

3. SATURDAY, JUNE 8TH AND 15TH-SLEEPING KITTY WORKSHOP

PET PORTRAITURE IS MY FIRST LOVE IN WATERCOLOR AND I HAVE DONE A LOT OF COMMISSION WORK THROUGH THE YEARS FOR PEOPLE'S FURRY FAMILY MEMBERS.

LEARN MY TECHNIQUES IN PAINTING BELIEVABLE FUR TO USE IN YOUR OWN ANIMAL PAINTINGS.







## Venarella Hinkle's Master Supply List and

### Color Choices for Sleeping Kitty Workshop 🐱

\*Intended for Venarella Hinkle's Workshop Attendees 😊

🎨 Daniel Smith Color Choices: Indigo, Ultramarine Blue, Burnt Umber, Burnt Sienna, Quinacridone Sienna, Lemon Yellow, Quinacridone Rose

\*Extra Item for this Course: You will need a Nylon Scrubber Brush  
Masters Touch-medium (comes in a Set of Three/Hobby Lobby)

Or

Creative Mark Nylon Scrubber Brush size 4

Or

You may use an old soft toothbrush

1. One 2oz Spray Bottle
2. Rubber Cement Pick Upk
3. Pencil.
4. Kneaded Eraser, any brand.
5. Graphite Tracing Paper.
6. 2-inch Masking Tape.
7. Ruler (not used for every class)
8. Small Household Sponge
9. Paper Towels.
10. An Old Hand Towel.
11. Two Water Containers. Doesn't need to be fancy, can be clean empty plastic butter tubs.....etc.
12. Bar of soap in a baggie or container.
13. Hair Dryer, preferably with a cold shot button
14. Winsor & Newton REMOVABLE Art Masking Fluid, tinted yellow.
15. Paint Brushes: Here are two brands, unless you already have your favorites
  - Sliver Black Velvet Round size 8
  - Sliver Black Velvet Round size 6
  - Purchase an extra Round synthetic size 4 or 6 designated as your Masking Fluid Brush.
  - Silver Black Velvet Oval Wash Brush 3/4
  - Small round size 1 or 2 any brand
  - or
  - Princeton Velvet Touch Brushes:
    - Velvet Touch Round size 8
    - Velvet Touch Round size 6
    - Purchase an extra size 4 or 6 synthetic round any brand to be reserved as your

Masking Fluid Brush.

-Velvet Touch Wash Brush size 3/4 inch.

-Small round size 1 or 2 any brand

16. Palette: Stephen Quiller standard (large) or travel (smaller) round Palette with cover. You may already have your favorite Palette, however for me this round shape is good for learning the color wheel and color mixing.

Or

You may also just use a white platter or plate (squeeze out a dollop of each pigment for this Course on the edge of plate and use the center for mixing paint).

17. Watercolor Paint: Here are two brands (one has both professional and student grade). I use mostly tube Artist grade or Professional Daniel Smith Watercolor Paint. I have narrowed down the recommended colors you will need for this Course

-Daniel Smith Extra Fine Watercolors: Indigo, Ultramarine Blue, Burnt Umber, Burnt Sienna, Quinacridone Sienna, Lemon Yellow, Quinacridone Rose

or

If you decide to purchase Winsor & Newton (Professional) Watercolor Tube Paints

or

Winsor & Newton Cotman (Student Grade) Paint: Indigo, Ultramarine or French

Ultramarine Blue, Burnt Umber, Burnt Sienna,

Transparent Orange or Cadmium Orange Hue and Lemon Yellow mix, Lemon Yellow, Permanent Rose

18. Good paper is a must for good results. Good grade Professional Watercolor Paper is not the thing to skimp on. I use -9x12 140 lb. Arches Cold Press Watercolor Paper Tablet or Pad.

Just make sure the paper you use is 100% Cotton.

\*Note: How to Stretch your paper: We will be working on an 8x10 format.

Paper should be approximately 9x12, placed on a towel front side down, wet back of paper well, when Paper has started to warp, place on board dry side up and tape off at 1/2 in., or staple all around, let dry over night.

I use Homasote sound proofing board from Home Depot cut a bit larger than my paper and staple my stretched wet paper to it. Tape off if you desire a white border, leaving a bit bigger than an 8x10 opening.

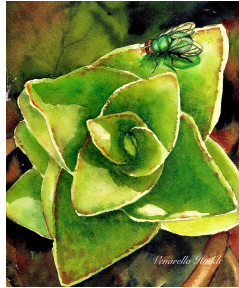
This should be done at least the night before each Workshop.

4. SATURDAY JULY 6TH AND 13TH-SUCCULENT WORKSHOP

WHILE THIS WORKSHOP WILL TEACH LIGHT AND DARK CONTRAST THAT ADDS LOADS OF DRAMA, I DIDN'T KNOW A FLY COULD ALSO BE BEAUTIFUL. BLUE BOTTLE FLIES ARE TWICE THE SIZE OF A HOUSEFLY AND ARE DIFFERENTIATED FROM OTHER FLIES THANKS TO THEIR BRIGHT IRIDESCENT BLUE GREEN COLOR.







## Venarella Hinkle's Demystifying Watercolor Master Supply List and Color Choices for "Succulent" Course 🌿

\*Intended for Venarella Hinkle's Workshop Attendees 😊

🎨 Color Choices for this Course: (Daniel Smith) Indigo, Sap Green, Green Gold, Quinacridone Sienna, Phthalo Green or Viridian, Duochrome Turquoise (optional), Ultramarine Blue  
See #17 other brand paints

1. Spray Bottle, small
2. Magic Eraser (Mr. Clean Brand or any off brand is fine)
3. Pencil.
4. Kneaded Eraser
5. Graphite Tracing or Transfer Paper.
6. 2-inch Masking Tape.
7. Small Household Sponge
8. Paper Towels
9. An Old Hand Towel.
10. Two Water Containers. Doesn't need to be fancy, can be clean empty plastic butter tubs.....etc...
11. Hair Dryer, preferably with a cold shot button
12. Winsor and Newton REMOVABLE Masking Fluid. (Note: We will, not be using Masking Fluid for this Course).
13. Paint Brushes: Unless you already have your favorites here are two brands  
Silver Black Velvet:  
-Silver, Black Velvet Round Brush size 6  
-Silver, Black Velvet Round Brush size 8  
-An extra size 4 or 6 Round brush to be reserved as your Masking Fluid Brush.  
Sharpen the end of this Masking Fluid brush.  
-Silver, Black Velvet Oval Wash Brush 3/4 inch  
-Scrip Liner size 1 or 2 any brand  
or

Princeton Velvet Touch

-Velvet Touch Wash Brush 3\4 inch

-Velvet Touch Round size 6

-Velvet Touch Round size 8

-An extra size 4 or 6 Round Brush to be reserved as your Masking Fluid Brush.

Sharpen the end of this Masking Fluid brush.

-Script Liner size 1 or 2 any brand

14. Palette: I use a Stephen Quiller standard round Palette with cover.

You may already have your favorite Palette, however a round shape is good for learning the color wheel and color mixing. Choose a Palette with a lid to help keep your paints from drying out. Otherwise use a white plate or tray.

15. I use Artist Professional Watercolor tube paints. I have narrowed down the recommended colors you will need for this Course:

Daniel Smith Extra Fine Tube Watercolors:

-Indigo, Sap Green, Green Gold, Quinacridone Sienna, Phthalo Green or Viridian, Duochrome Turquoise (optional), Ultramarine Blue

Or

If you decide to purchase Winsor and Newton Professional Tube Paint or Winsor & Newton Cotman Student Grade Paint: (Note: The difference in Professional and Student Grade paint is in pigment strength)

-Indigo, Ultramarine or French Ultramarine, Quinacridone Sienna or Transparent Orange (or a mix of Cadmium Orange Hue and Yellow Lemon), Sap Green, Green Gold (or a mix of Green and Lemon Yellow Hue), Antwerp Blue or Viridian Hue.

18. Good paper is a must for good results. 100% Cotton Professional Watercolor Paper is not the thing to skimp on. I use Arches 140 lb. Cold Pressed.

-9x12 140 lb. Arches Cold Press Watercolor Paper Tablet

\*Note: How to Stretch your paper: We will be working on an 8x10 format for the Workshop's.

Paper should be cut at approximately 9x12. Place on a towel front side down, wet back of paper well, when Paper has started to warp, place on a

board dry side up. Pull paper by holding corners, you will feel it stretch a bit.

Tape off at 1/2 in. all the way around, or staple 1/2 in. apart on the very edges of the paper all the way around, let dry. I use Homasote Board, a soundproofing building material, cut a couple inches larger than my paper.

This should be done at least the night before each Workshop.

5. SATURDAY, AUGUST 3RD AND 10TH-CONURE PARROT WORKSHOP  
THIS PARROT'S NAME IS NICKEL. HE IS A FAMILY PET OF SOME GOOD FRIENDS OF MINE OF WHICH I CREATED A  
THIS WORKSHOP WILL TEACH HOW TO CREATE THAT LOOSE PAINTERLY STYLE WITH NO MASKING FLUID AND  
LEARN MY LIFTING METHODS FOR DETAILS







## Venarella Hinkle's Master Supply List and Color Choices for Conure Parrot Workshop 🦜

This Workshop will teach you how to create a loose painterly style with no masking fluid used. Learn my lifting methods for details.

\*Intended for Venarella Hinkle's Workshop Attendees 😊

🎨 Color Choices for this Course: Green Gold, Sap Green, Ultramarine Blue, Permanent Yellow Lemon, Burnt Umber, Indigo, Pyrrole Red, Alizarin Crimson, Phthalo Green.

1. Spray Bottle, small.
2. Magic Eraser (Mr. Clean Brand or any off brand is fine)
3. Pencil.
4. Kneaded Eraser, any brand. Kneaded erasers don't leave behind debris.
5. Pencil Sharpener.
6. Graphite (pencil, erasable) Tracing Paper.
7. 2-inch Masking Tape.
8. Ruler
9. Small Household Sponge
10. Paper Towels
11. An Old Hand Towel.
12. Two Water Containers. Doesn't need to be fancy, can be clean empty plastic butter tubs.....etc...
13. Hair Dryer, preferably with a cold shot button.
14. Paint Brushes: Unless you already have your favorites, here are two Brands  
Silver Black Velvet Brushes:  
 -Silver Black Velvet Round Brush size 6  
 -Silver Black Velvet Round Brush size 8  
 -Purchase an extra Round synthetic brush size 4 or 6 brush to be reserved as your Masking Fluid Brush.  
 -Silver Black Velvet Oval Wash Brush 3/4 inch  
 -Small round size 1 or 2 any brand  
 or  
 Princeton Velvet Touch Brushes:

- Velvet Touch Round size 6
  - Velvet Touch Round size 8
  - Purchase an extra Round size 4 or 6 to be reserved as your Masking Fluid Brush. Sharpen the end of this Masking Fluid Brush.
  - Velvet Touch Wash Brush size 3/4 inch.
  - Small round size 1 or 2 any brand
15. Palette: I use a Stephen Quiller standard (large) or travel (smaller) round Palette with cover.  
You may already have your favorite Palette, however a round shape is good for learning the color wheel and color mixing. Choose a Palette with a lid to help keep your paints from drying out. Otherwise use a white plate or tray.
16. Paint: Here are two Brands, one has both Professional and Student Grade.  
I use Daniel Smith Artist grade or Professional Watercolor tube paints. I have narrowed down the recommended colors you will need for this Course.

Daniel Smith Extra Fine Tube Watercolors (Professional Artist Grade):

-Green Gold, Sap Green, Ultramarine Blue, Permanent Yellow Lemon, Burnt Umber, Indigo, Pyrrole Red, Alizarin Crimson, Phthalo Green.  
or

If you decide to purchase Winsor & Newton (Professional) Paint or Winsor & Newton Cotman (Student Grade) Paint:

Sap Green, Lemon Yellow or Winsor Yellow, Ultramarine or French Ultramarine, Burnt Umber, Indigo, Cadmium Red, Alizarin Crimson, Phthalo Green, Green Gold

17. Good paper is a must for good results. Professional Watercolor Paper is not the thing to skimp on. I use Arches 140 lb. 100% cotton Cold Pressed.  
-9x12 140 lb. Arches Cold Press Watercolor Paper Tablet

\*Note: How to Stretch your paper: We will be working on an 8x10 format for the Workshop's.

Paper should be cut at approximately 9x12. Place on a towel front side down, wet back of paper well, when Paper has started to warp, place on a board dry side up. Pull paper by holding corners, you will feel it stretch a bit. Tape off at 1/2 in. all the way around, or staple 1/2 in. apart on the very edges of the paper all the way around, let dry. I use Homasote Board, a soundproofing building material, cut a couple inches larger than my paper.  
This should be done at least the night before each Workshop.

6. SATURDAY, SEPTEMBER 14TH AND 21ST-MONARCH BUTTERFLY WORKSHOP  
THIS WORKSHOP WILL TEACH YOU MY BOKEH AFFECT. BOKEH IS A PHOTOGRAPHY TERM TO DESCRIBE THE PLEASING OR AESTHETIC QUALITY OF OUT-OF-FOCUS BLUR IN A PHOTOGRAPH.








## Venarella Hinkle's Master Supply List and

### Color Choices for my Monarch Butterfly Workshop

 Color Choices for this Workshop: Sap Green, Indigo, Burnt Umber, Green Gold  
Ultramarine Blue, Lemon Yellow, Opera or Quinacridone Rose

1. One 2oz Spray Bottle
2. Rubber Cement Pick Up
3. Pencil.
4. Kneaded Eraser
5. Graphite Tracing or Transfer Paper.
6. 2-inch Masking Tape.
7. Ruler. (Not needed for every Workshop)
8. Small Household Sponge
9. Paper Towels
10. An Old Hand Towel.
11. Two Water Containers. Doesn't need to be fancy, can be clean empty plastic butter tubs.....etc.
12. Bar of soap in a baggie or container.
13. Hair Dryer, preferably with a cold shot button
14. Winsor & Newton REMOVABLE Art Masking Fluid, tinted yellow
15. Paint Brushes: Here are two brands, unless you already have your favorites
  - Sliver Black Velvet Round size 8
  - Sliver Black Velvet Round size 6
  - Purchase an extra Round synthetic size 4 or 6 to be reserved as your Masking Fluid Brush. Any brand
  - Silver Black Velvet Oval Wash Brush 3/4
  - Small round size 1 or 2 any brand
  - or
  - Princeton Velvet Touch Brushes:
    - Velvet Touch Round size 8
    - Velvet Touch Round size 6
    - Purchase an extra synthetic round size 4 or 6 to be reserved as your Masking Fluid Brush.
    - Velvet Touch Wash Brush size 3/4 inch.
    - Small round size 1 or 2 any brand
17. Palette: Stephen Quiller standard (large) or travel (smaller) round Palette with cover. You may already have your favorite Palette, however this round

shape is good for learning the color wheel and color mixing.

18. Watercolor Paint: Here are two brands (one has both professional and student grade). I use tube Artist Grade or Professional Daniel Smith Watercolor Paint. I have narrowed down the recommended colors you will need for this Course

-Daniel Smith Extra Fine Watercolors: Sap Green, Indigo, Burnt Umber, Green Gold Ultramarine Blue, Lemon Yellow, Opera or Quinacridone Rose

or

If you decide to purchase Winsor & Newton (Professional) Watercolor Tube Paints

or

Winsor & Newton Cotman (Student Grade) Paint:

(Note: Student grade paint will not have the pigment strength professional paint has).

Sap Green, Indigo, Burnt Umber, Green Gold, Ultramarine or French Ultramarine, Lemon Yellow Hue, Opera Rose or Permanent Rose

19. Good paper is a must for good results. Good grade Professional Watercolor Paper is not the thing to skimp on. I use Arches 100% cotton 140 lb Cold Pressed -9x12 140 lb. Arches Cold Press Watercolor Paper block or pad

\*Note: How to Stretch your paper: We will be working on an 8x10 format.

Paper should be cut at approximately 9x12, placed on a towel front side down, wet back of paper well, when Paper has started to warp, place on board dry side up and tape off at 1/2 in., or staple all around, let dry over night.

This should be done at least the night before each Workshop.